



MONTHLY MEMBERSHIP PROGRESS REPORT

District 120

Results as of: 01/31/2018

GMT: ANTTI FORSELL

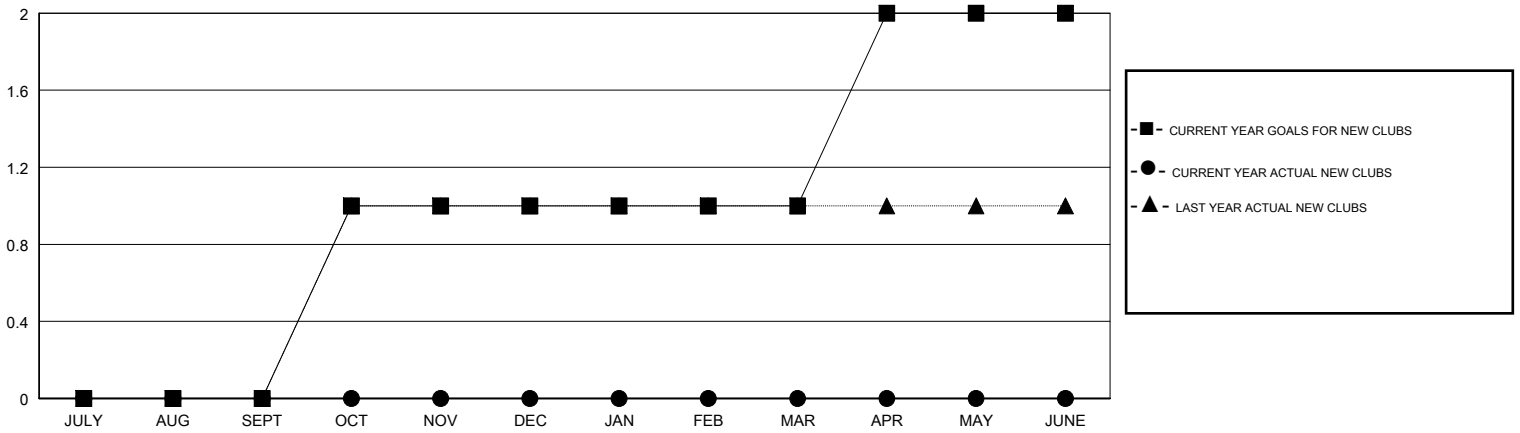
LOCATION ESTONIA

GMT CA

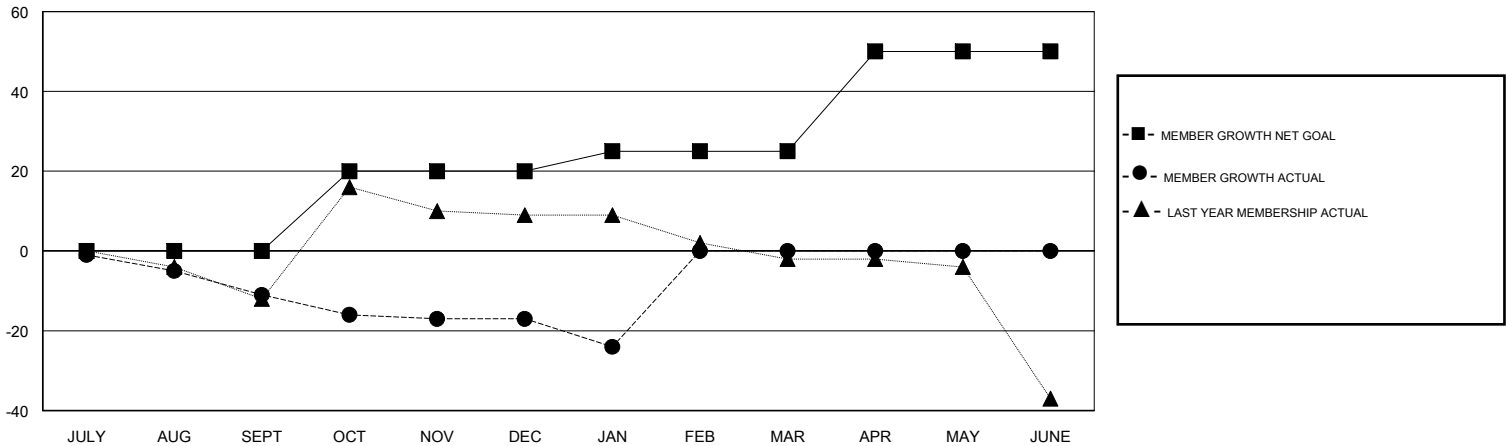
Clubs			
RESULTS FOR 2017-2018			
QUARTER	NEW CLUB GOAL	NEW CLUBS	DROPPED CLUBS
JULY/AUG/SEPT	0	0	2
OCT/NOV/DEC	1	0	0
JAN/FEB/MAR	0	0	0
APR/MAY/JUNE	1	0	0

Members			
RESULTS FOR 2017-2018			
QUARTER	MEMBER GROWTH NET GOAL	MEMBER GROWTH ACTUAL	DROPPED MEMBERS ACTUAL (including transfers)
JULY/AUG/SEPT	0	5	16
OCT/NOV/DEC	20	10	16
JAN/FEB/MAR	5	4	11
APR/MAY/JUNE	25	0	0

GOALS AND ACTUAL NEW CLUBS CUMULATIVE



GOALS AND ACTUAL MEMBERS CUMULATIVE



DROPPED CLUBS: 2	16 CLUBS OF 61 ADDED 1 OR MORE NEW MEMBERS	<u>GENDER DISTRIBUTION</u> MALE 861 (71.51%) FEMALE 343 (28.49%) Women Percentage Fiscal Year Goal: 31%
<u>DROPPED MEMBERS</u> DECEASED 2 CLUB CANCELLED 0 OTHER 41 TOTAL 43	CLICK HERE FOR CUMULATIVE MEMBERSHIP DATA	TOTAL FAMILY UNIT MEMBERS 81 FAMILY MEMBERS PAYING HALF DUES 42